



JSB-A12-200(12V200Ah)

JSB-A12-200 is a general purpose battery with 10 years floating design life, meet with IEC, JIS .BS and Eurobat standard. With heavy duty grid, thickness plates, special additives, JSB-A series battery have long and reliable standby service life. Our JSB-A series batteries keep high consistent for better performance in series usage.



Specification

| | |
|--|---|
| Cells Per Unit | 6 |
| Voltage Per Unit | 12 |
| Capacity | 200Ah@10hr-rate to 1.75V per cell @25 °C |
| Weight | Approx. 60.0 Kg |
| Max. Discharge Current | 2000A (5 sec) |
| Internal Resistance | Approx. 4 mΩ |
| Operating Temperature Range | Discharge: -20°C~60°C Charge: 0°C~50°C Storage: -20°C~60°C |
| Normal Operating Temperature Range | 25°C±5°C |
| Float charging Voltage | 13.6 to 13.8 VDC/unit Average at 25°C |
| Recommended Maximum Charging Current Limit | 60 A |
| Equalization and Cycle Service | 14.6 to 14.8 VDC/unit Average at 25°C |
| Self Discharge | JALPOWER batteries can be stored for more than 6 months at 25°C. Self-discharge ratio less than 3% per month at 25°C. Please charge batteries before using. |
| Terminal | Terminal F12/F16 |
| Container Material | A.B.S. (UL94-HB), Flammability resistance of UL94-V1 can be available upon request. |



MH28539



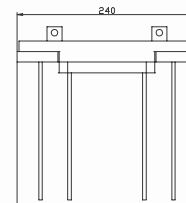
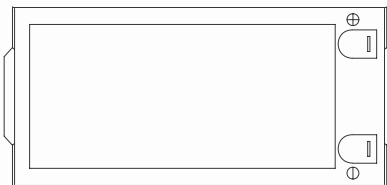
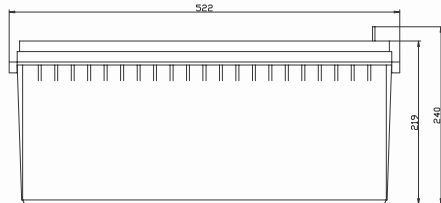
G4M20206-0910-E-16



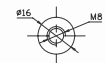
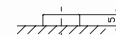
ISO9001:2000 Certificate

Dimensions

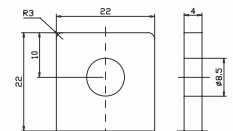
Unit: mm Dimension: 522(L)×240(W)×240(H)



Terminal F12



Terminal F16



Constant Current Discharge Characteristics: A (25°C)

| F.V/Time | 5MIN | 10MIN | 15MIN | 30MIN | 1HR | 2HR | 3HR | 4HR | 5HR | 8HR | 10HR | 20HR |
|----------|--------|--------|--------|--------|--------|--------|--------|--------|--------|--------|--------|--------|
| 9.60V | 696.54 | 514.56 | 374.40 | 230.00 | 130.00 | 72.618 | 52.200 | 43.200 | 35.360 | 24.844 | 21.006 | 11.109 |
| 10.0V | 677.91 | 489.60 | 366.72 | 226.20 | 129.40 | 72.072 | 52.000 | 43.000 | 35.152 | 24.642 | 20.804 | 10.907 |
| 10.2V | 638.80 | 472.32 | 360.96 | 224.20 | 128.20 | 71.526 | 51.600 | 42.800 | 34.944 | 24.440 | 20.602 | 10.705 |
| 10.5V | 573.62 | 435.84 | 343.68 | 218.60 | 127.00 | 70.980 | 51.400 | 42.400 | 34.528 | 24.238 | 20.400 | 10.503 |
| 10.8V | 533.76 | 397.44 | 316.80 | 209.00 | 124.00 | 69.706 | 50.000 | 41.400 | 33.904 | 23.834 | 20.198 | 10.301 |
| 11.1V | 464.64 | 355.20 | 284.16 | 195.80 | 117.80 | 66.612 | 47.800 | 39.400 | 32.448 | 22.824 | 19.592 | 9.6950 |

Constant Power Discharge Characteristics: W(25°C)

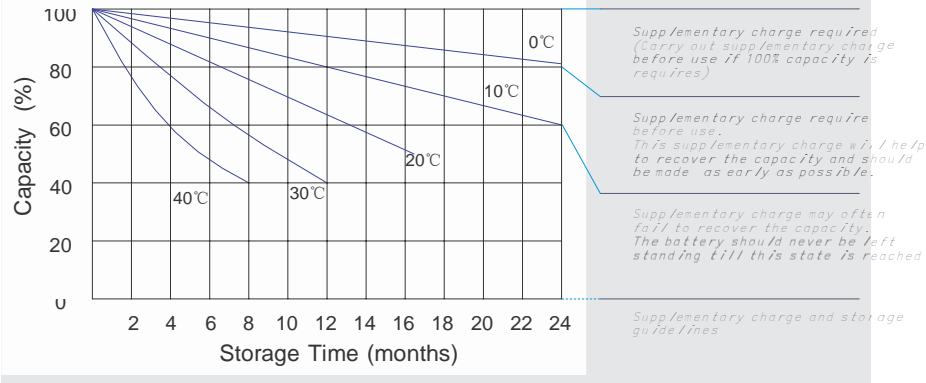
| F.V/Time | 5MIN | 10MIN | 15MIN | 30MIN | 1HR | 2HR | 3HR | 4HR | 5HR | 8HR | 10HR | 20HR |
|----------|--------|--------|--------|--------|--------|--------|--------|--------|--------|--------|--------|--------|
| 9.6V | 6633.9 | 5001.1 | 3682.2 | 2595.6 | 1486.8 | 835.38 | 602.40 | 499.20 | 409.34 | 288.28 | 236.20 | 124.76 |
| 10.0V | 6498.4 | 4776.7 | 3605.7 | 2563.2 | 1479.6 | 832.10 | 601.20 | 498.00 | 406.85 | 287.07 | 233.78 | 123.55 |
| 10.2V | 6134.3 | 4617.5 | 3556.7 | 2533.2 | 1468.8 | 824.46 | 597.60 | 495.60 | 405.60 | 284.65 | 232.57 | 122.34 |
| 10.5V | 5523.8 | 4266.7 | 3391.5 | 2475.6 | 1454.4 | 816.82 | 594.00 | 492.00 | 401.86 | 282.23 | 230.14 | 121.13 |
| 10.8V | 5122.4 | 3874.0 | 3116.1 | 2362.8 | 1418.4 | 804.80 | 579.60 | 478.80 | 395.62 | 276.17 | 227.72 | 119.92 |
| 11.1V | 4421.7 | 3440.5 | 2782.6 | 2214.0 | 1344.0 | 767.68 | 550.80 | 456.00 | 375.65 | 266.48 | 220.45 | 115.07 |

All mentioned values are average values.

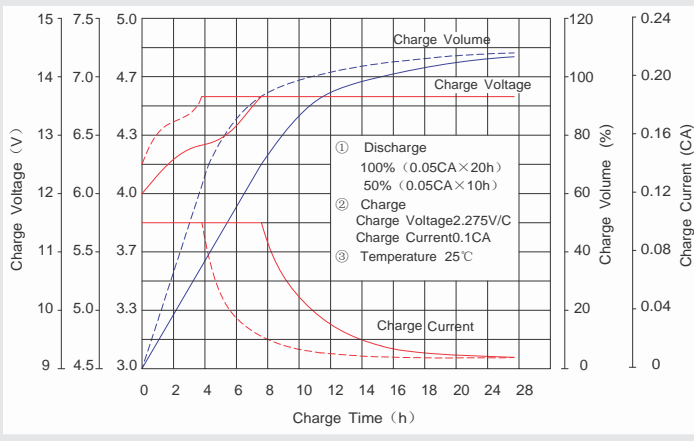
Effect of temperature on long term float life



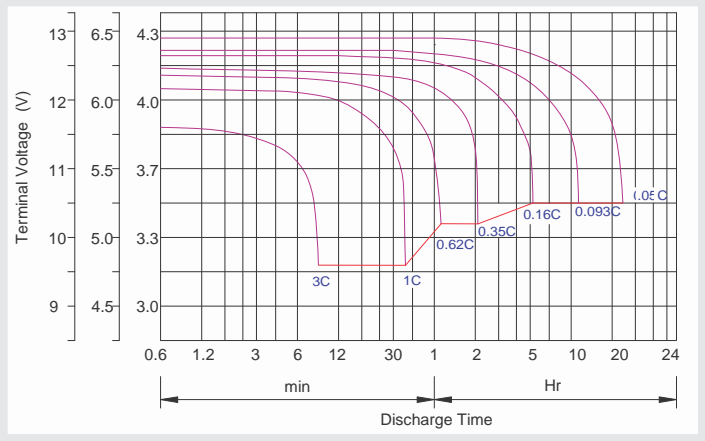
Storage characteristic



Charge characteristic Curve for standby use



Discharge characteristic Curve



Capacity Factors With Different Temperature

| Battery Type | | -20°C | -10°C | 0°C | 5°C | 10°C | 20°C | 25°C | 30°C | 40°C | 45°C |
|--------------|--------|-------|-------|-----|-----|------|------|------|------|------|------|
| GEL Battery | 6V&12V | 50% | 70% | 83% | 85% | 90% | 98% | 100% | 102% | 104% | 105% |
| | 2V | 60% | 75% | 85% | 88% | 92% | 99% | 100% | 103% | 105% | 106% |
| AGM Battery | 6V&12V | 46% | 66% | 76% | 83% | 90% | 98% | 100% | 103% | 107% | 109% |
| | 2V | 55% | 70% | 80% | 85% | 92% | 99% | 100% | 104% | 108% | 110% |

Discharge Current VS. Discharge Voltage

| | | | |
|--------------------------------|------------|-------------------|------------|
| Final Discharge Voltage V/cell | 1.75V | 1.70V | 1.60V |
| Discharge Current (A) | (A) ≤ 0.2C | 0.2C < (A) < 1.0C | (A) ≥ 1.0C |

Charge the batteries at least once every six months, if they are stored at 25°C.

Charging Method:

| | |
|------------------|---|
| Constant Voltage | -0.2Cx2h+2.4-2.45V/cellx24h, Max. Current 0.3CA |
| Constant Current | -0.2Cx2h+0.1CAx 12h |
| Fast | -0.2Cx2h+0.3CAx4.0h |

Maintenance & Cautions

| |
|---|
| Float Service: |
| ※ Every month, recommend inspection every battery voltage. |
| ※ Every three months, recommend equalization charge for one time. |
| Equalization charge method: |
| Discharge: 100% rate capacity discharge. |
| Charge: Max. current 0.3CA, constant voltage 2.4-2.45V/Cell charge 24h. |
| ※ Effect of temperature on float charge voltage: -3mV/°C/Cell. |
| ※ Length of service life will be directly affected by the number of discharge cycles, depth of discharge, ambient temperature and charging voltage. |