



JSB-G12-120 (12V120Ah)

JSB-G12-120 is GEL Standby battery with 10 + years floating design life time .The solid Gel protects no way to suffer electrolyte stratification and ensure mild corrosion, its special separator eradicates infection between plates to prevent short circuit. it offers extra-durable performance under extreme temperature.



Specification

Cells Per Unit	6
Voltage Per Unit	12
Capacity	120Ah@20hr-rate to 1.75V per cell @25°C
Weight	Approx. 35.5 Kg
Max. Discharge Current	1200 A (5 sec)
Internal Resistance	Approx. 6.75 mΩ
Operating Temperature Range	Discharge: -40°C~60°C Charge: -20°C~50°C Storage: -40°C~60°C
Normal Operating Temperature Range	25°C±5°C
Float charging Voltage	13.6 to 13.8 VDC/unit Average at 25°C
Recommended Maximum Charging Current Limit	24 A
Equalization and Cycle Service	14.2 to 14.4 VDC/unit Average at 25°C
Self Discharge	JALPOWER batteries can be stored for more than 6 months at 25°C. Self-discharge ratio less than 3% per month at 25°C. Please charge batteries before using.
Terminal	Terminal F5/F12
Container Material	A.B.S. (UL94-HB), Flammability resistance of UL94-V1 can be available upon request.



MH28539



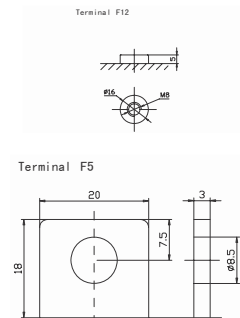
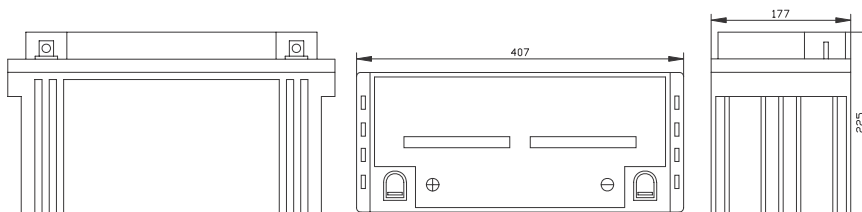
G4M20206-0910-E-16



ISO9001:2000 Certificate

Dimensions

Unit: mm Dimension: 407(L)×177(W)×225(H)



Constant Current Discharge Characteristics: A (25°C)

F.V/Time	5MIN	10MIN	15MIN	30MIN	1HR	2HR	3HR	4HR	5HR	8HR	10HR	20HR
9.60V	394.23	282.49	205.55	129.03	72.930	40.828	29.284	24.235	19.074	14.086	11.910	6.2988
10.0V	383.69	268.79	201.33	126.90	72.593	40.521	29.172	24.123	18.962	13.972	11.796	6.1842
10.2V	361.55	259.30	198.17	125.78	71.920	40.214	28.948	24.011	18.850	13.857	11.681	6.0697
10.5V	324.66	239.28	188.68	122.63	71.247	39.907	28.835	23.786	18.625	13.743	11.567	5.9552
10.8V	293.03	218.19	173.92	117.25	69.564	39.191	28.050	23.225	18.289	13.514	11.452	5.8407
11.1V	255.09	195.00	156.00	109.84	66.086	37.451	26.816	22.103	17.503	12.941	11.109	5.4971

Constant Power Discharge Characteristics: W (25°C)

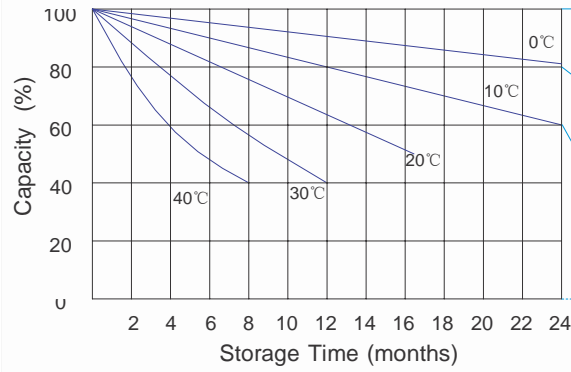
F.V/Time	5MIN	10MIN	15MIN	30MIN	1HR	2HR	3HR	4HR	5HR	8HR	10HR	20HR
9.6V	3754.7	2745.6	2021.5	1456.1	834.09	469.68	337.95	280.05	220.81	163.46	133.93	70.740
10.0V	3677.9	2622.4	1979.5	1438.0	830.06	467.84	337.27	279.38	219.46	162.77	132.55	70.053
10.2V	3471.9	2535.0	1952.7	1421.1	824.00	463.54	335.25	278.03	218.79	161.40	131.86	69.366
10.5V	3126.4	2342.4	1861.9	1388.8	815.92	459.24	333.23	276.01	216.77	160.02	130.49	68.680
10.8V	2812.2	2126.8	1710.7	1325.5	795.72	452.49	325.16	268.61	213.40	156.59	129.12	67.993
11.1V	2427.5	1888.8	1527.6	1242.1	753.98	431.61	309.00	255.82	202.63	151.10	125.00	65.246

All mentioned values are average values.

Effect of temperature on long term float life



Storage characteristic



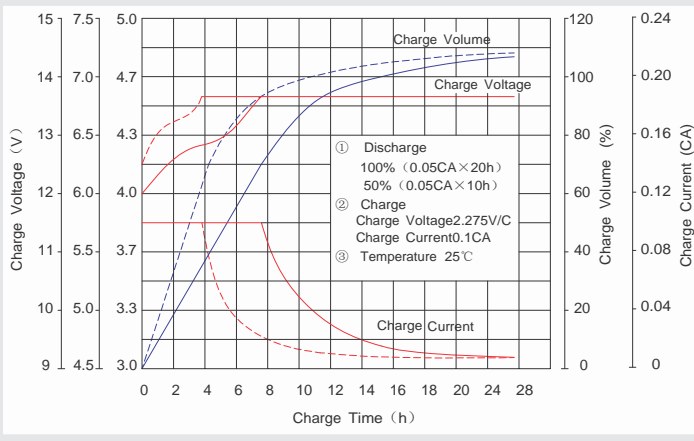
Supplementary charge required (Carry out supplementary charge before use if 100% capacity is required)

Supplementary charge required before use. This supplementary charge will help to recover the capacity and should be made as early as possible.

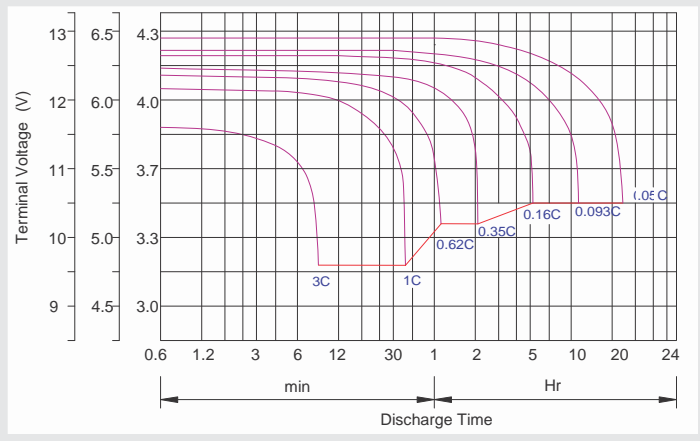
Supplementary charge may often fail to recover the capacity. The battery should never be left standing till this state is reached

Supplementary charge and storage guidelines

Charge characteristic Curve for standby use



Discharge characteristic Curve



Capacity Factors With Different Temperature

Battery Type		-20°C	-10°C	0°C	5°C	10°C	20°C	25°C	30°C	40°C	45°C
GEL Battery	6V&12V	50%	70%	83%	85%	90%	98%	100%	102%	104%	105%
	2V	60%	75%	85%	88%	92%	99%	100%	103%	105%	106%
AGM Battery	6V&12V	46%	66%	76%	83%	90%	98%	100%	103%	107%	109%
	2V	55%	70%	80%	85%	92%	99%	100%	104%	108%	110%

Discharge Current VS. Discharge Voltage

Final Discharge Voltage V/cell	1.75V	1.70V	1.60V
Discharge Current (A)	(A) ≤ 0.2C	0.2C < (A) < 1.0C	(A) ≥ 1.0C

Maintenance & Cautions

Float Service:
※ Every month, recommend inspection every battery voltage.
※ Every three months, recommend equalization charge for one time.
Equalization charge method:
Discharge: 100% rate capacity discharge.
Charge: Max. current 0.2CA, constant voltage 2.35-2.4V/Cell charge 24h.
※ Effect of temperature on float charge voltage: -3mV/°C/Cell.
※ Length of service life will be directly affected by the number of discharge cycles, depth of discharge, ambient temperature and charging voltage.

Charge the batteries at least once every six months, if they are stored at 25°C.

Charging Method:

Constant Voltage	-0.2Cx2h+2.35-2.4V/cellx24h, Max. Current 0.2CA
Constant Current	-0.2Cx2h+0.1CAx12h
Fast	-0.2Cx2h+0.3CAx4.0h